

Bluetongue – pathological lesions



Focal hemorrhage on the buccal mucosa



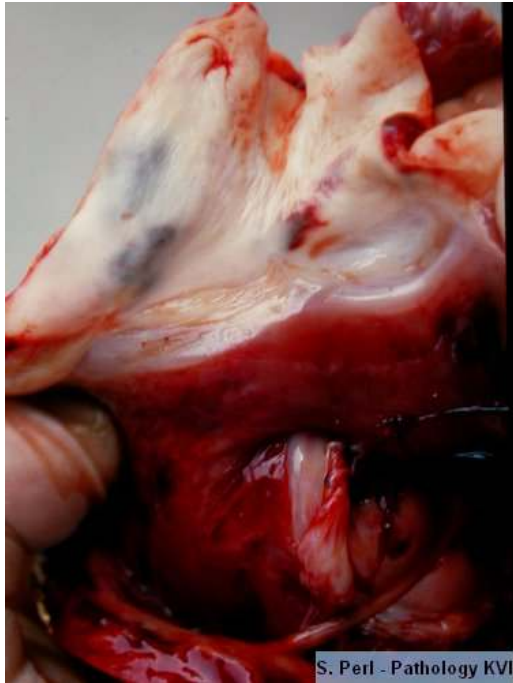
Hyperemia over the muzzle



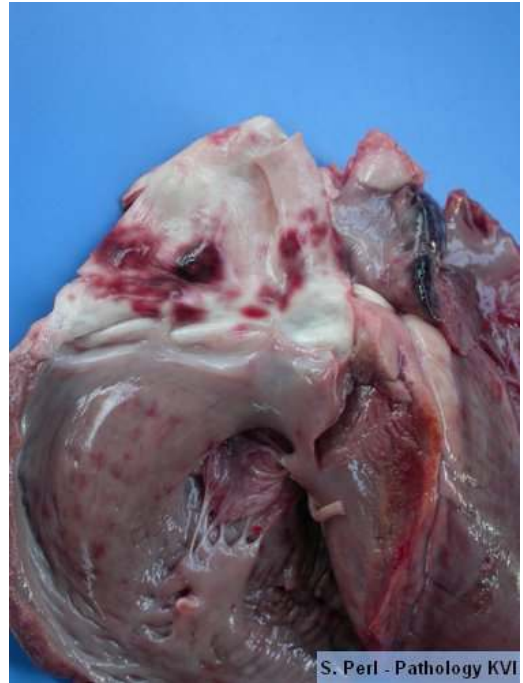
Multifocal hemorrhage and edema of lips



Multifocal hemorrhage on buccal papillae



Multifocal hemorrhage in the tunica media at the base of pulmonary artery



Multifocal hemorrhage in the tunica media at the base of pulmonary artery



Coronary swelling and streaky hemorrhages



Coronary swelling and streaky hemorrhages



Focal hemorrhage on the buccal mucosa



Multifocal hemorrhages on lip and mucosa of the hard palate/ dental pad



On the left hydrocephalus in aborted fetus due to BTV infection, on the right normal brain.