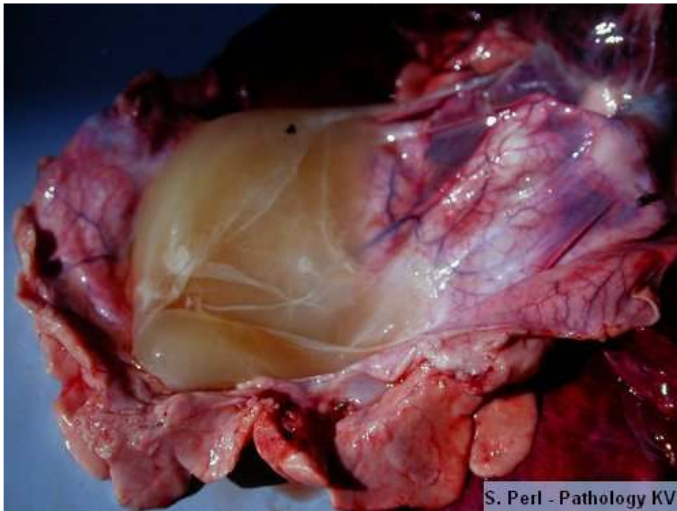


Pathological lesions in various diseases

2. Enterotoxemia



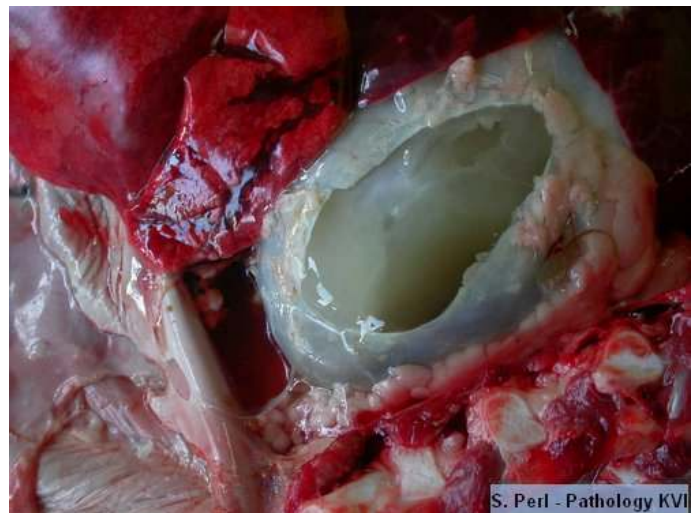
Large amount of serous fluid with fibrin in the pericardial cavity



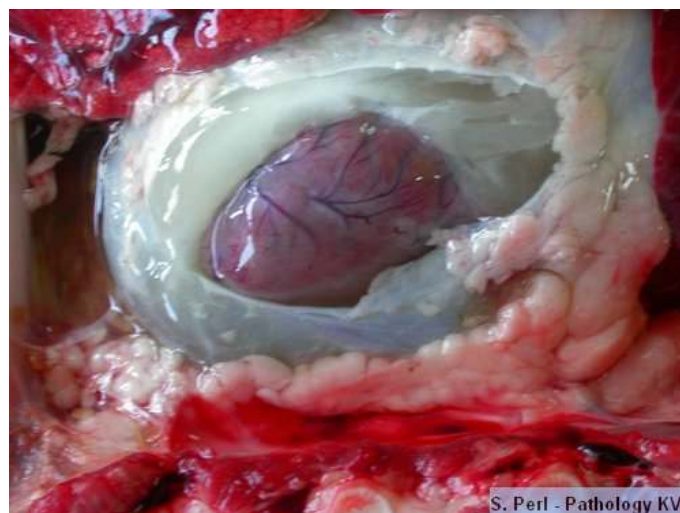
Large amount of gelatinous fibrin in the pericardial cavity



Distended pericardium due to fibrinous fluid



Large amount of gelatinous fibrin in the pericardial cavity



Large amount of gelatinous fibrin in the pericardial cavity