

# Hemorrhagic bowel syndrome of dairy cattle

The syndrome is known as jejunal hemorrhage syndrome (JHS), it is characterized by intraluminal hemorrhage with blood clots that lead to intestinal obstruction, small intestinal multifocal distention, small intestinal ileus and necrohemorrhagic jejunitis or enteritis.

Distended jejunum with clotted blood **A, B, E, F**. Segmental obstruction by a blood clot **C**.

Necrohemorrhagic enteritis with intraluminal clostridial bacteria **G, H, I, J, K**.



**A**



**B**



**C**



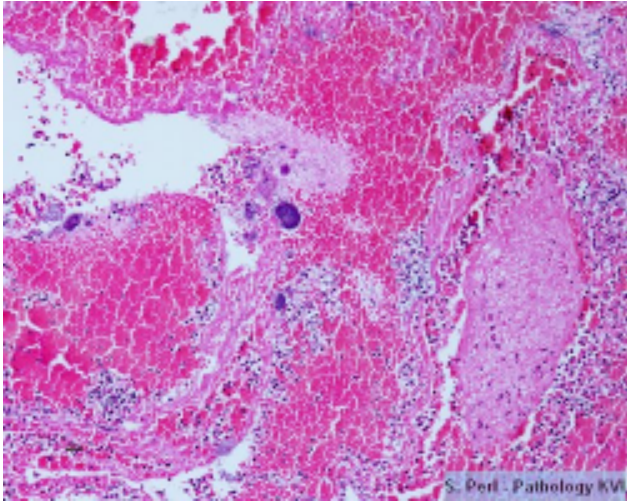
**D**



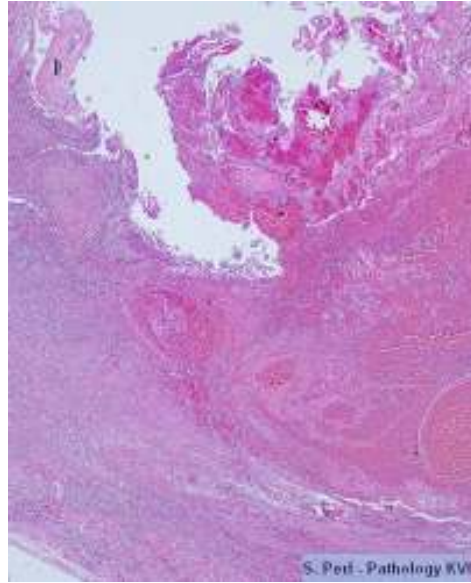
**E**



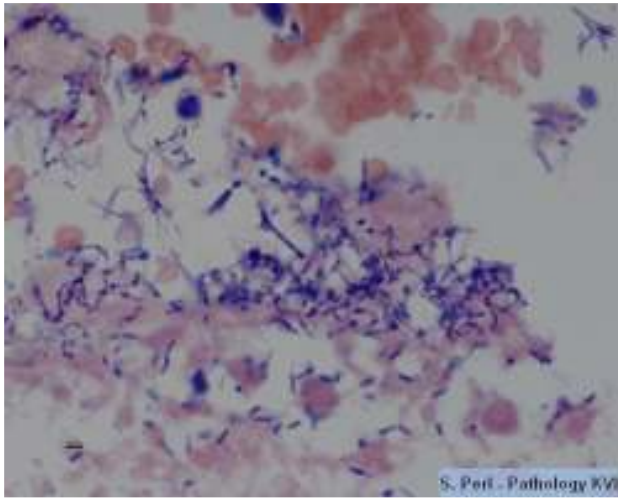
**F**



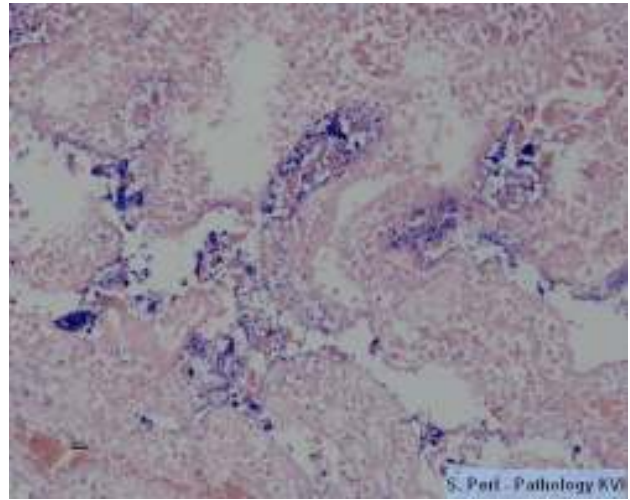
**G**



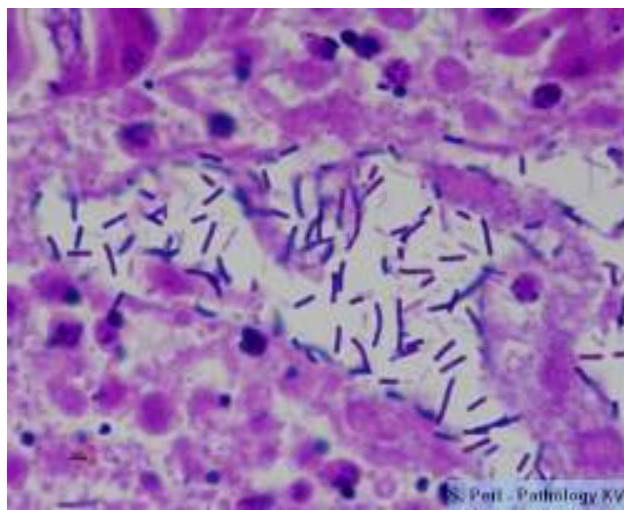
**H**



**I**



**J**



**K**