

## Lumpy skin disease (LSD)



Multifocal skin nodules of various sizes evident on the neck



Multifocal skin nodules on the thoracic area



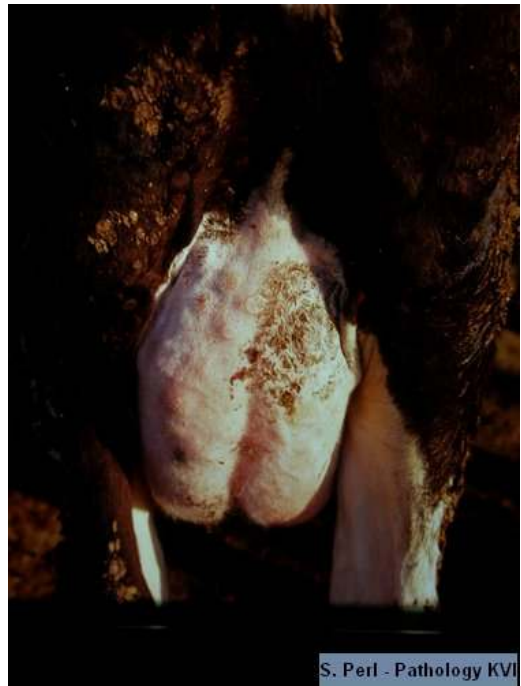
Multifocal skin nodules on the neck and head  
Sero-purulent conjunctivitis and rhinitis



Multifocal ulcerative skin lesion in an experimentally infected calf



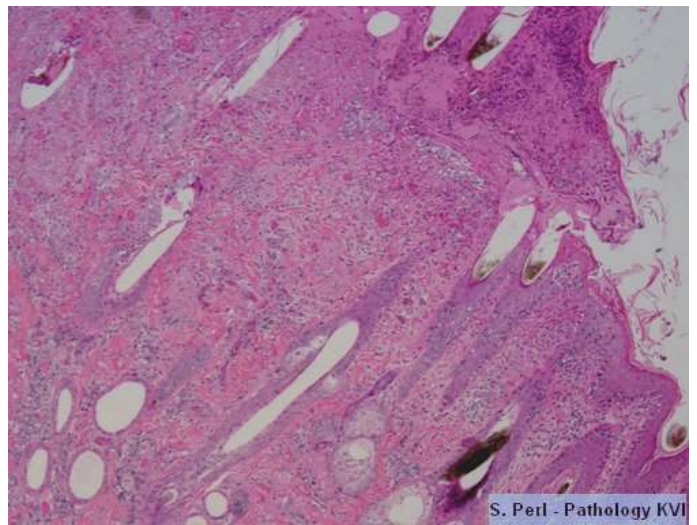
Multifocal skin nodules on the perineum, hind limbs, udder



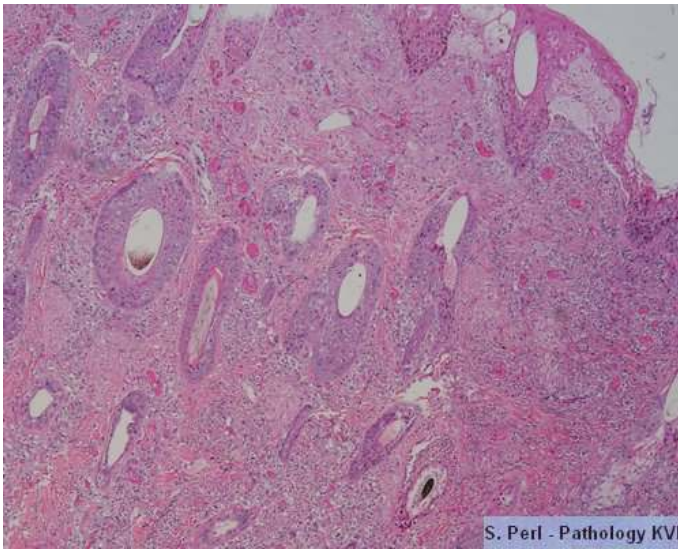
Multifocal skin nodules on the udder



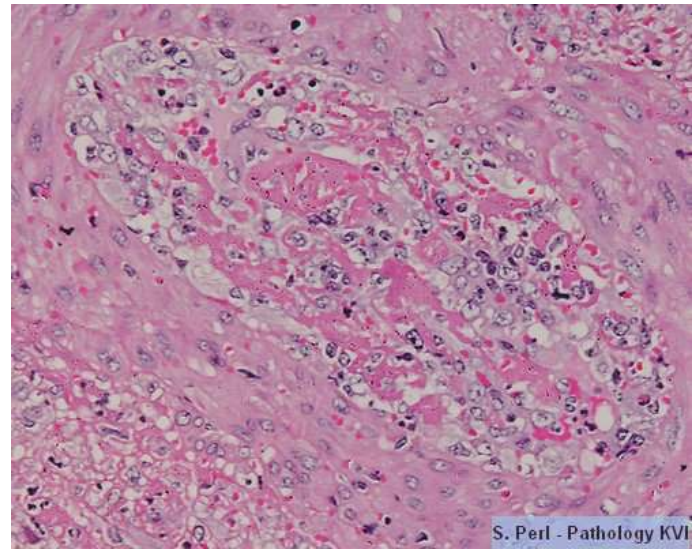
Multifocal nodules in the rumen of a young calf



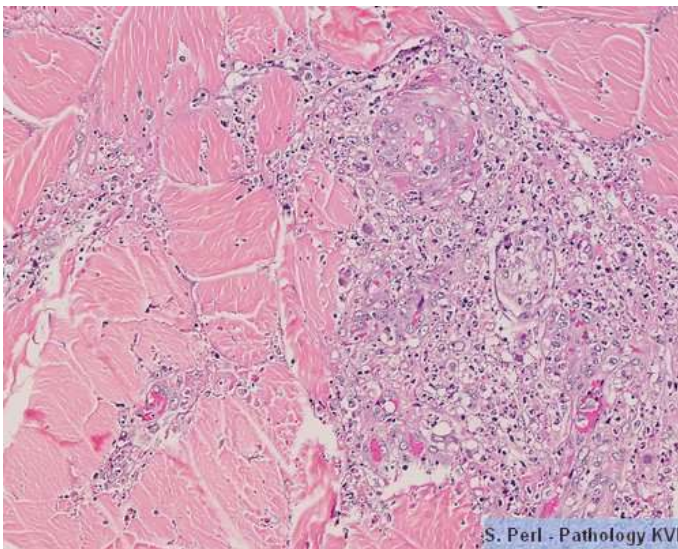
Skin- epidermal necrosis with diffuse infiltration with inflammatory cells in the dermis



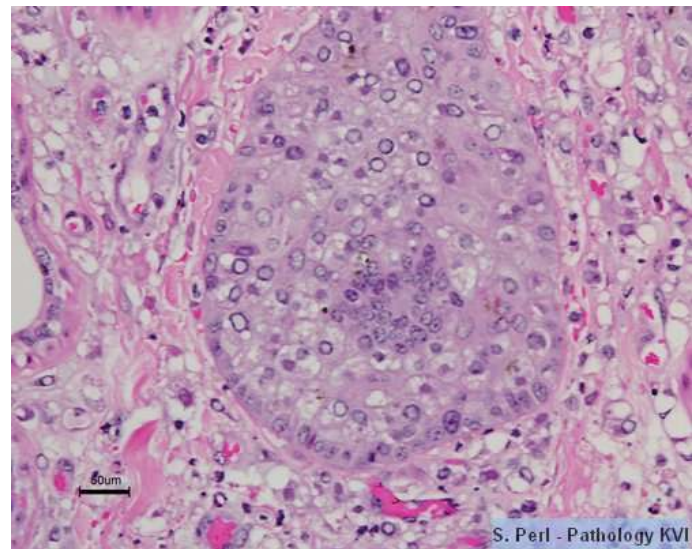
Skin - focal separation of the epidermis, necrotic epidermis, diffuse infiltration with inflammatory cells



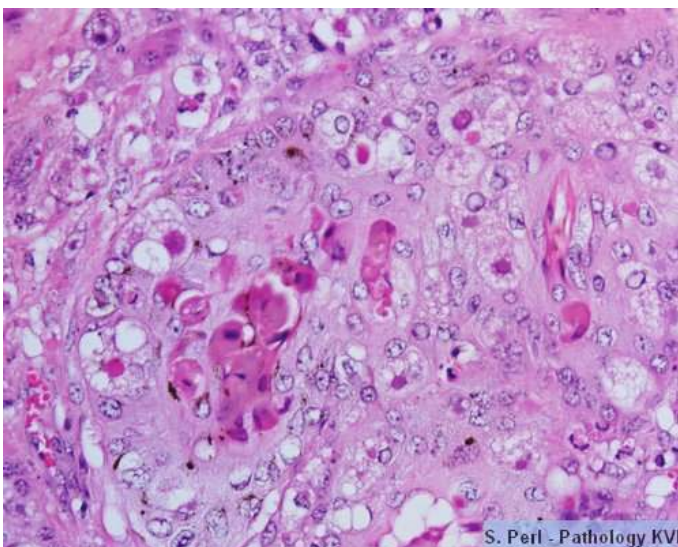
Skin - vasculitis and thrombosis in the deeper dermis



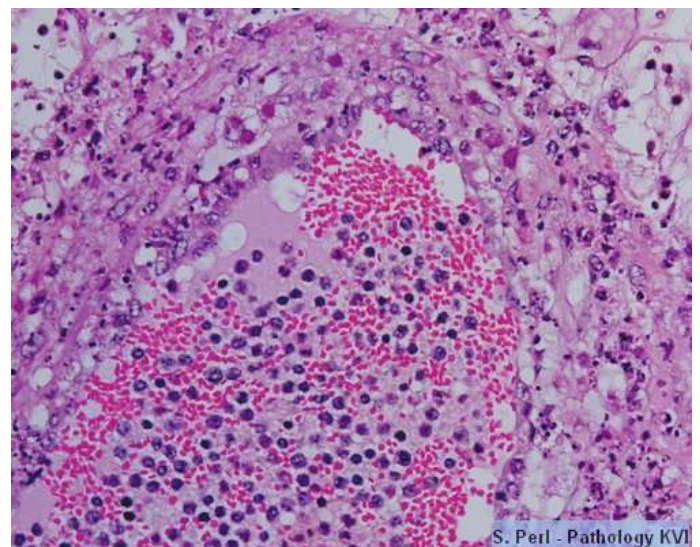
Deep perivascular dermatitis and necrosis



Skin - ballooning degeneration of squamous epithelial cells of a hair follicle and intracytoplasmic inclusion bodies



Skin - ballooning degeneration of squamous epithelial cells of a hair follicle and intracytoplasmic inclusion bodies



Skin, vasculitis, endothelial hyperplasia and necrosis and intracytoplasmic eosinophilic inclusion bodies