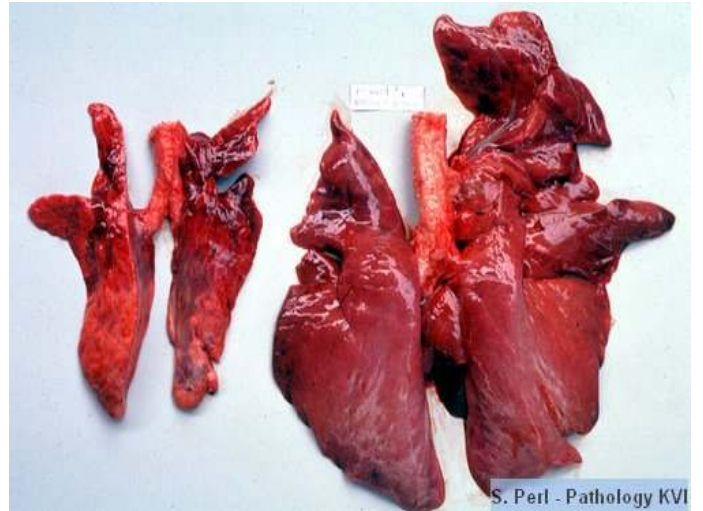


## Lungs



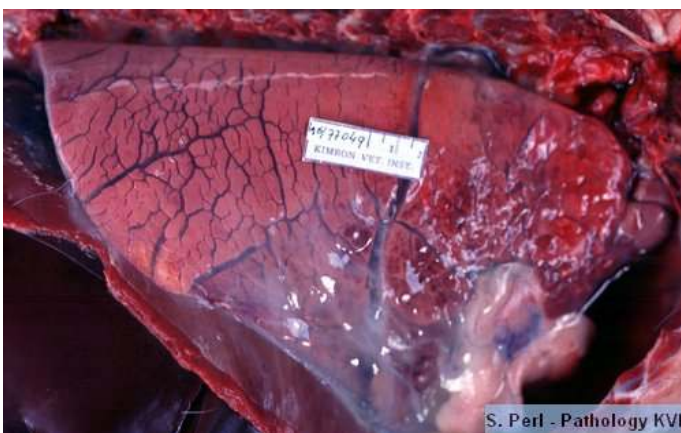
Pulmonary hypoplasia – calf a few hours after birth



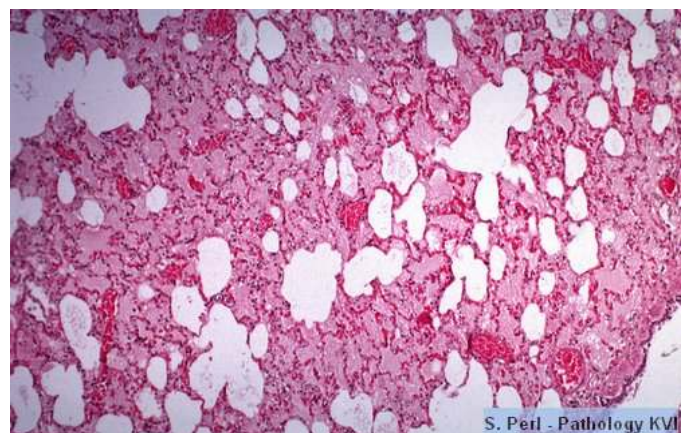
Hypoplastic lung partially inflated compared to a bovine fetus lung of late term pregnancy – note the lung is smaller compared to the fetus.



Pulmonary melanosis, bovine lung – note the black areas of the pleural surface.



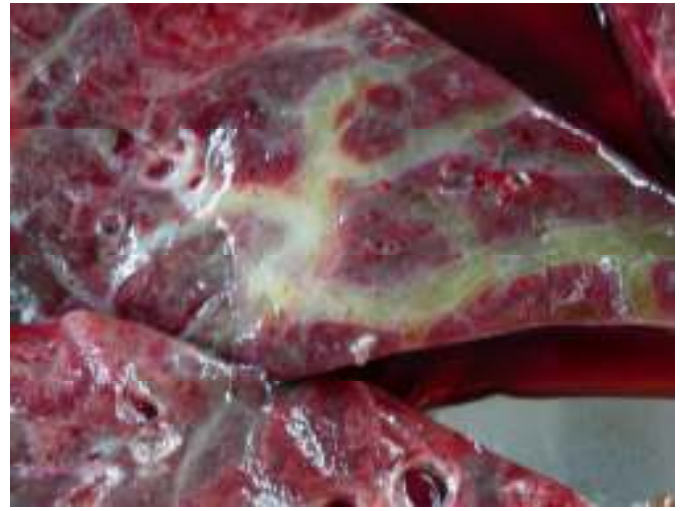
Pulmonary edema, lung sheep







Pleuritis and edema, lung, bovine



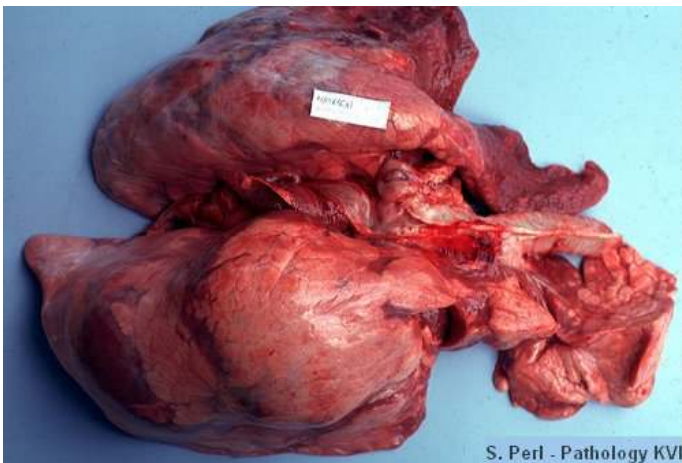
Pulmonary interlobular edema, lung, bovine



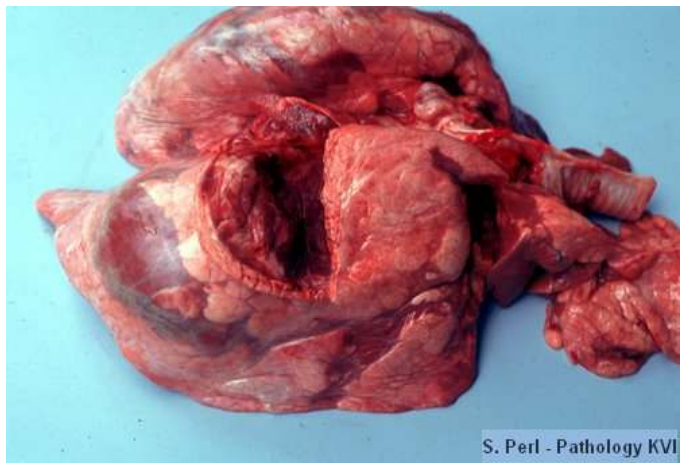
Pulmonary emphysema, bovine



Pulmonary emphysema, bovine



Bullous emphysema, bovine

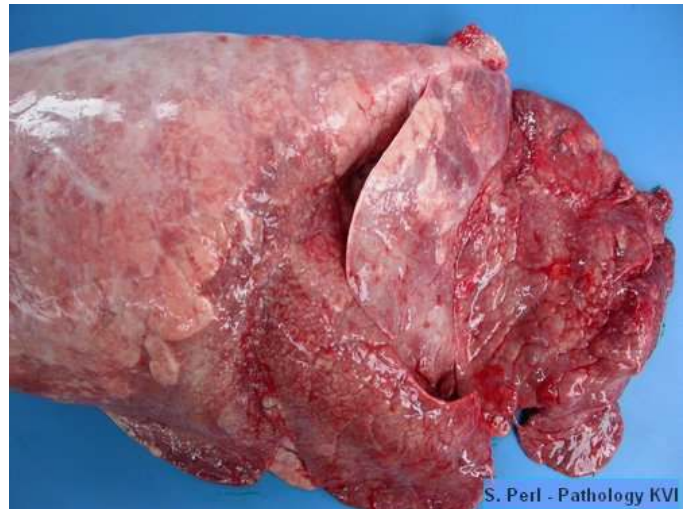


Bullous emphysema, bovine





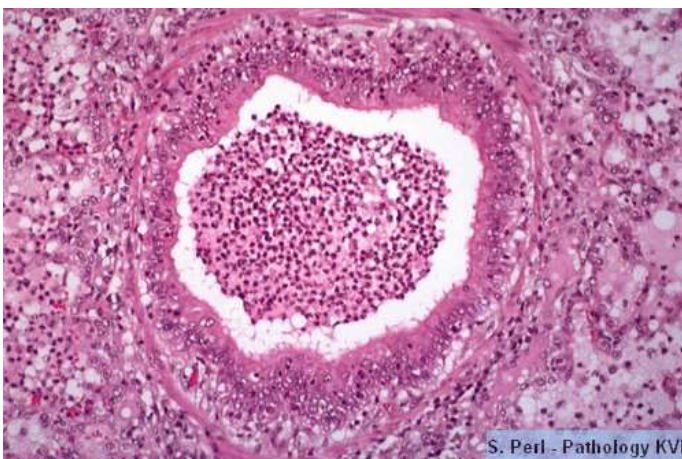
Suppurative bronchopneumonia, calf – cranioventral consolidation



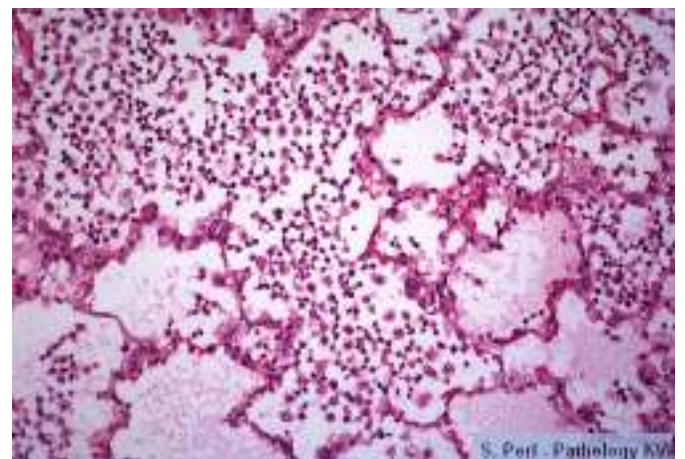
Cranioventral consolidation- sheep lung



Cranioventral consolidation- bovine lung

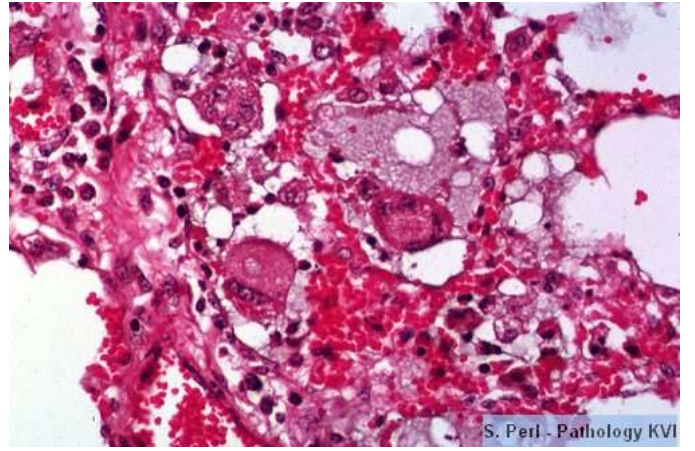
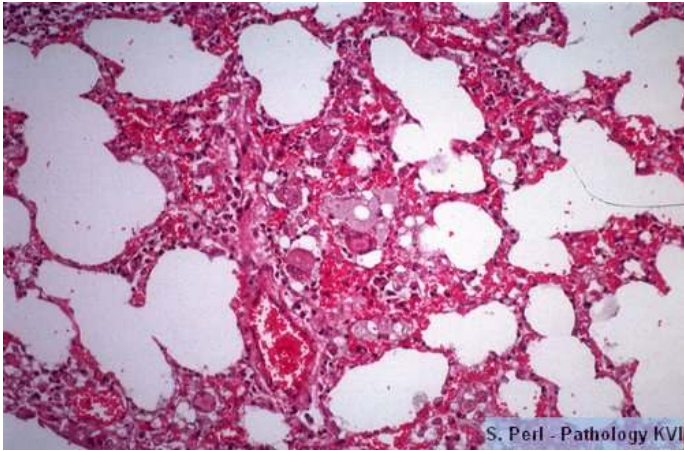


Bronchoalveolar pneumonia with edema



Bronchoalveolar pneumonia with edema, higher magnification of the alveoli





Interstitial pneumonia, note presence of syncytial giant cells, PPR, lung sheep



Embolic pneumonia, multifocal distribution in all lobes

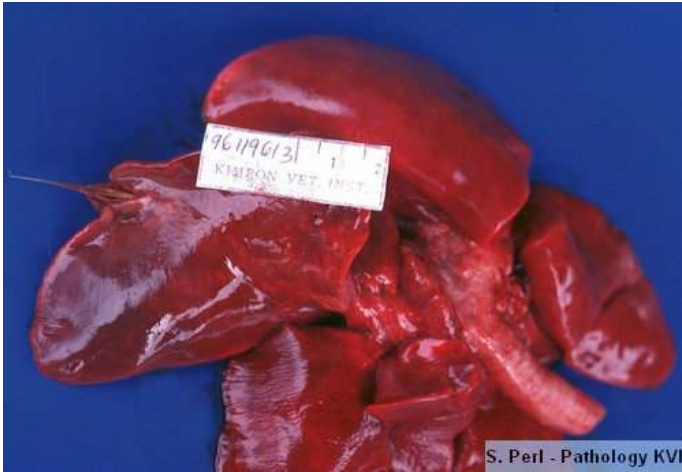


1



2





3



4

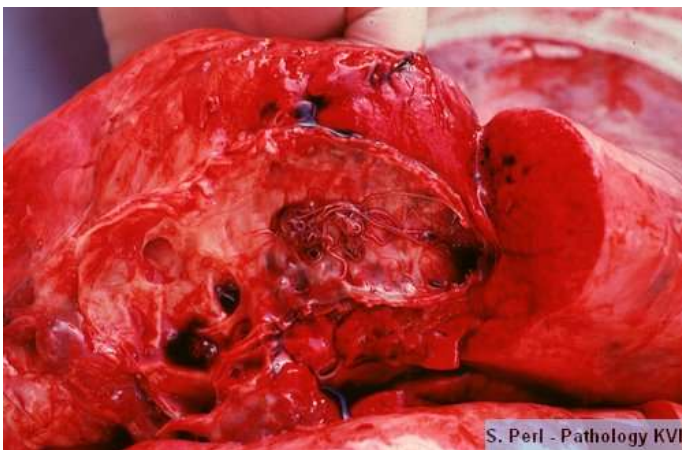
1,2,3,4. Foreign body (grass awn) entered the trachea, right bronchus, causing inflammation, dilacerating the lung parenchyma, exit the lung diaphragmatic lobe and stacked at the intercostals muscle



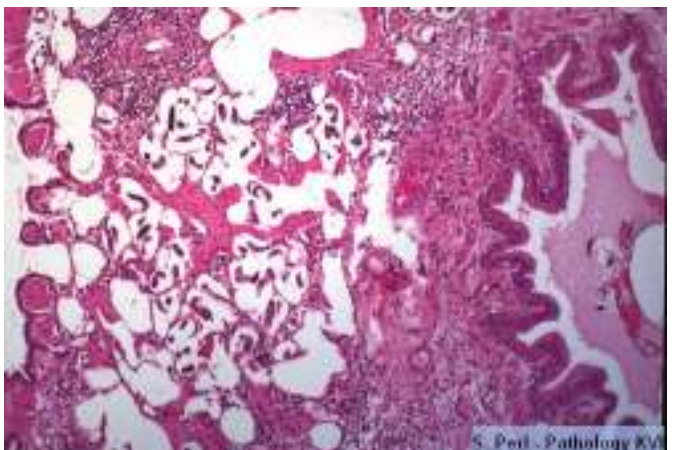
Hydatidosis (echinococcosis) lung, sheep



Hydatidosis, cyst filled with clear fluid containing larvae, enclosed by a fibrous capsule



Verminous pneumonia (*Dichtyocaulus viviparous*) in a bronchus, sheep



Verminous broncopneumonia sheep