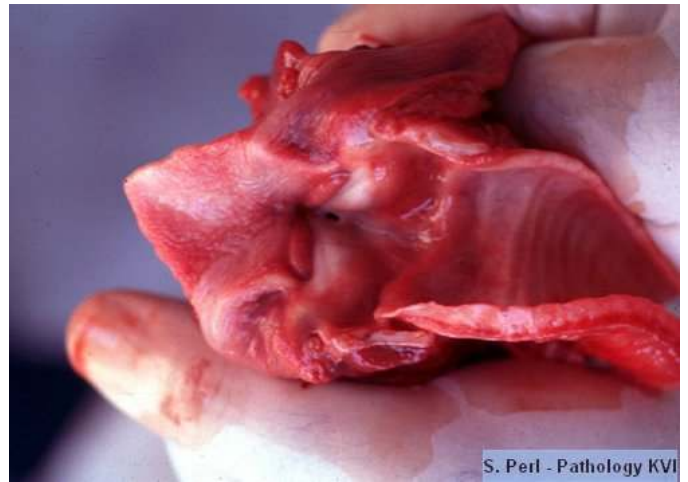


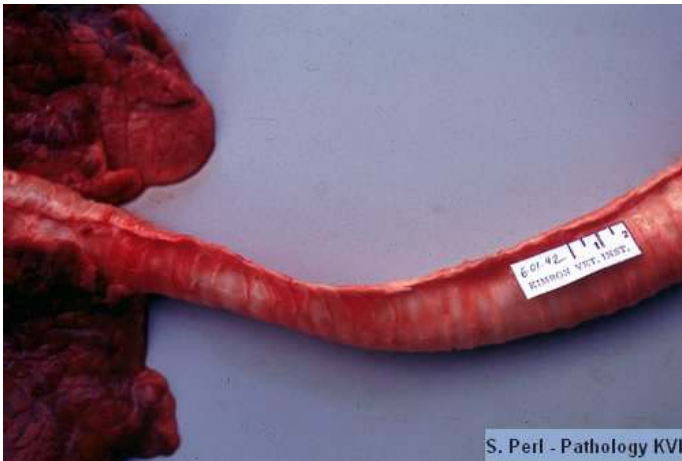
Pharynx, Larinx, Trachea



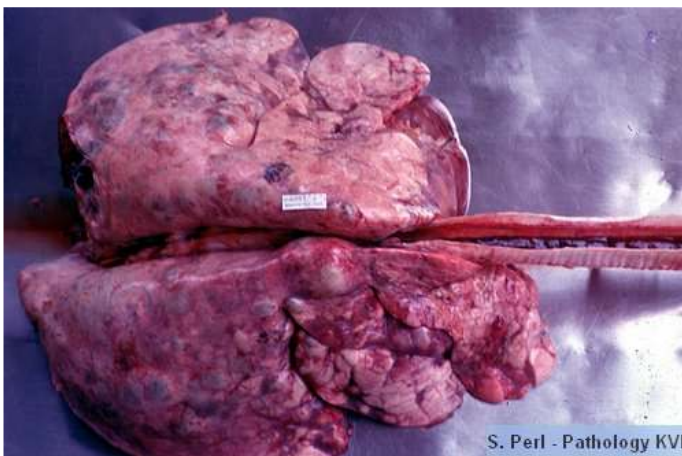
Eversion of laryngeal saccules



Eversion of laryngeal saccules



Tracheal hypoplasia, bovine calf – the tracheal lumen is decreased in the distal part.



Lung bovine with multifocal abscesses, an abscess eroded a large pulmonary artery causing bleeding into a large bronchus and trachea.



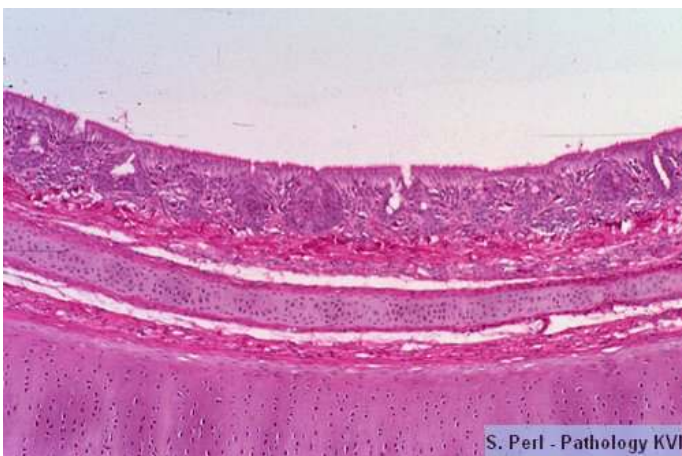
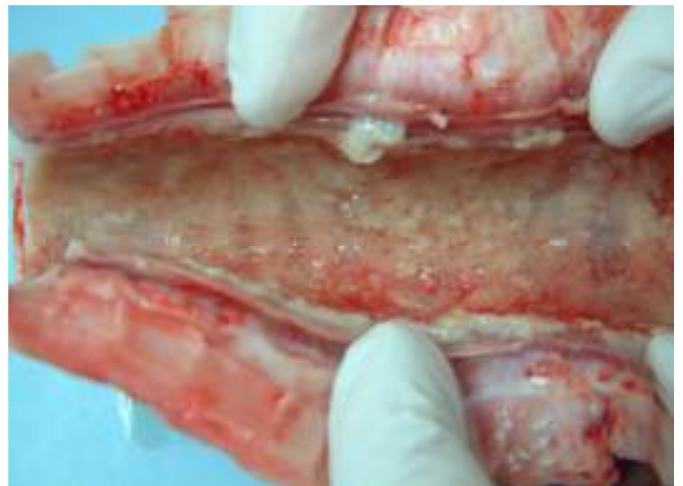
Trachea filled with blood clots due to hemorrhage



Larynx,dog - lymphosarcoma



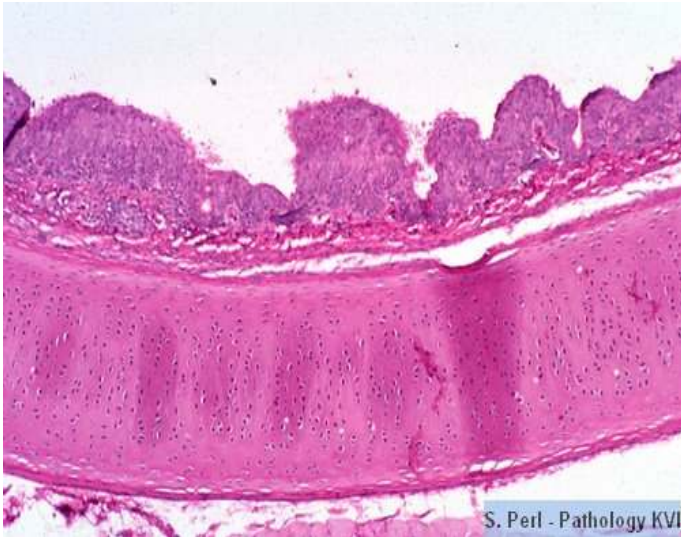
Trachea, calf- fibrinous tracheitis (IBR)



Trachea chicken - normal



Trachea chicken higher magnification showing ciliated epithelium



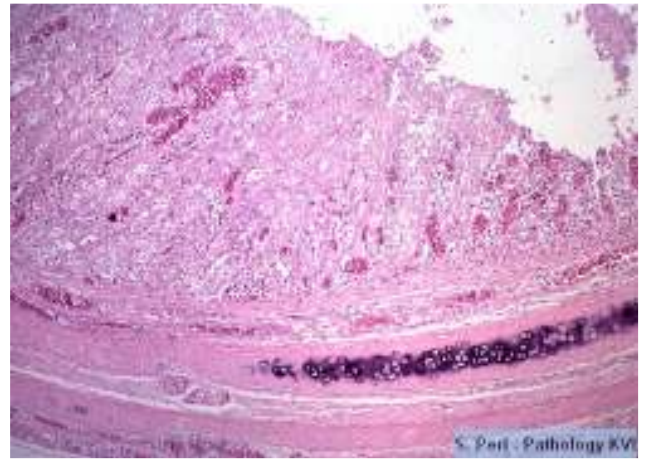
Tracheitis chicken caused by cryptosporidium



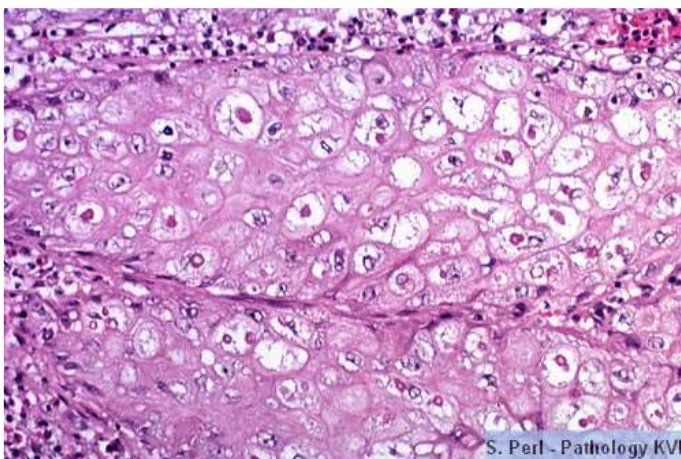
Tracheitis chicken caused by cryptosporidium, higher magnification



Trachea chicken – epithelia proliferation (pox)



Trachea chicken – epithelia proliferation (pox)



Trachea chicken –ballooning degeneration with intracytoplasmic inclusion bodies (pox)