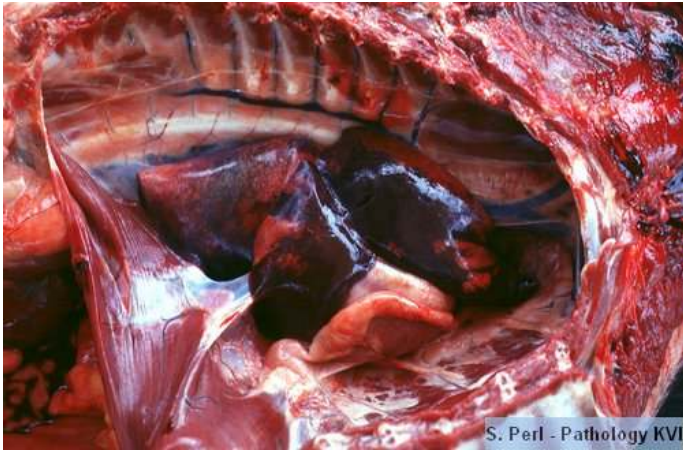


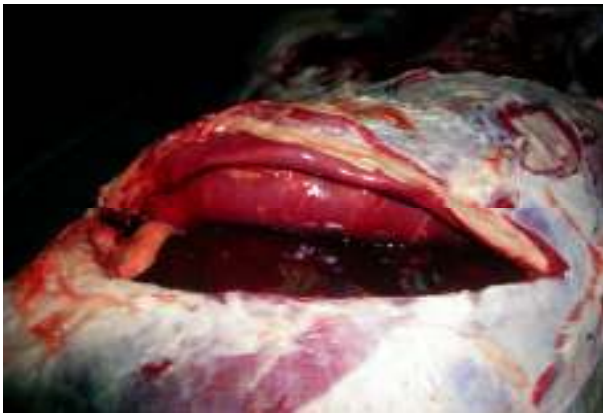
Pleura and thoracic cavity



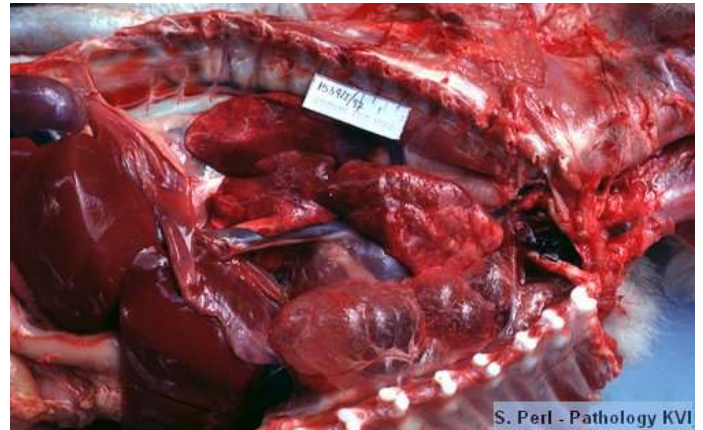
Pneumothorax and lung collapse, dog



Lung collapse- lung trauma (due to meat cure perforating the esophagus and the lung)



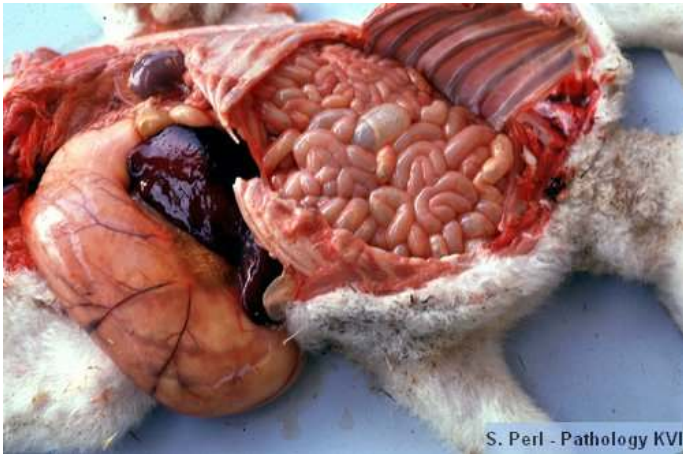
Tension pneumothorax, distended diaphragm, dog



Pneumothorax and lung collapse, large air bullae are visible in the mediastinum, dog

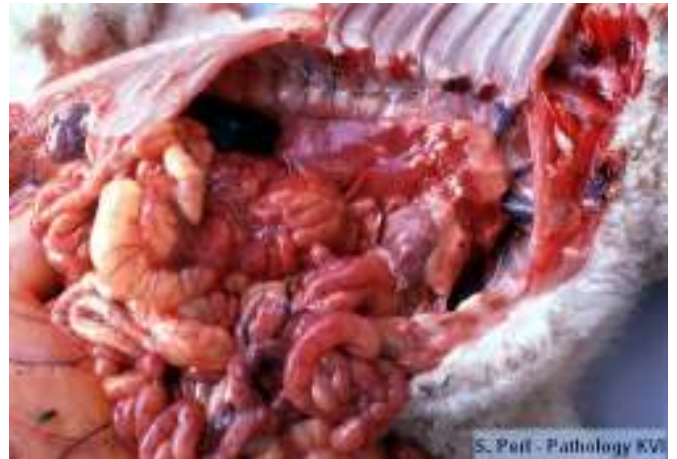


Hydrothorax and lung collapse, dog



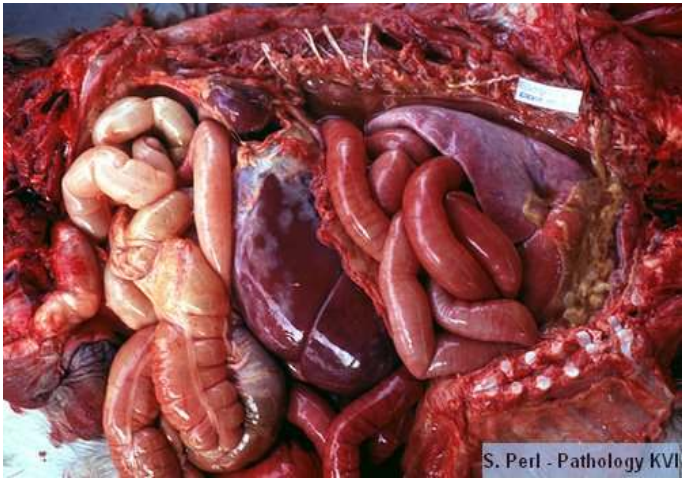
S. Perl - Pathology KVI

Diaphragmatic hernia, congenital, small intestine entered the right thorax, lamb



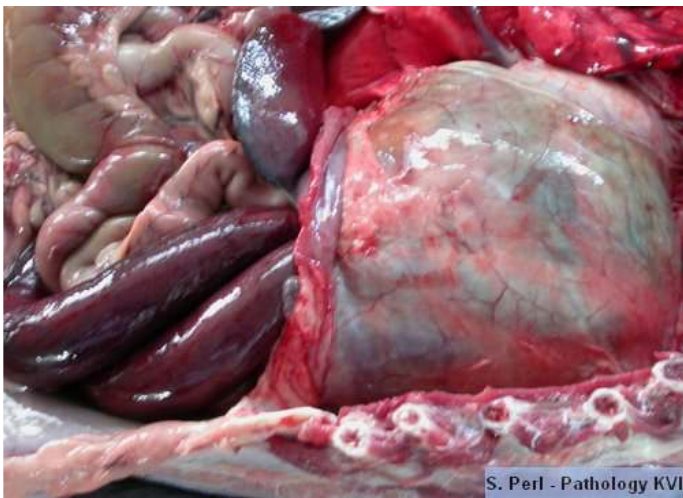
S. Perl - Pathology KVI

Diaphragmatic hernia and pulmonary atelectasis



S. Perl - Pathology KVI

Diaphragmatic hernia, congenital, a few day old foal



S. Perl - Pathology KVI

Diaphragmatic pericardial hernia, dog

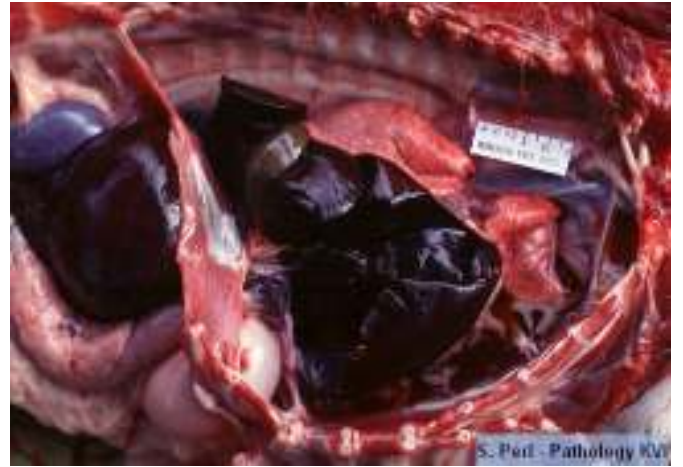


S. Perl - Pathology KVI

Diaphragmatic pericardial hernia, dog



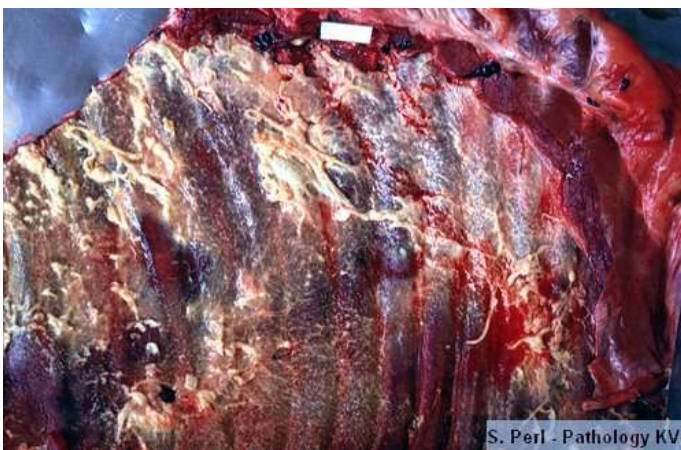
Diaphragmatic hernia, congested liver lobe is compressing the lung, dog



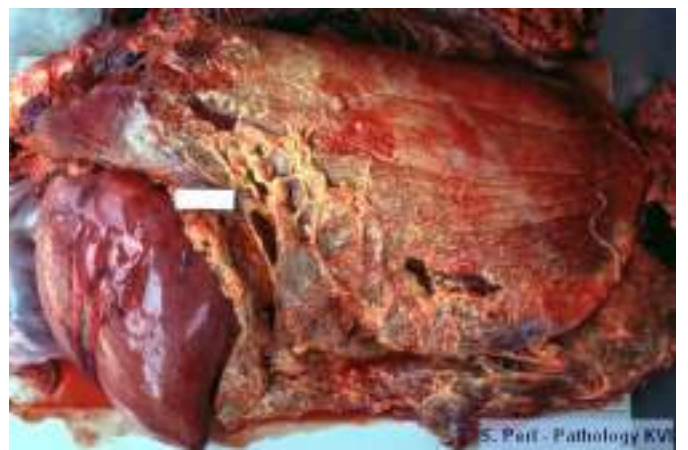
Pyothorax and lung atelectasis, due to esophageal perforation calf



Pyothorax and lung atelectasis, cat



Fibrinous pleuritis, horse

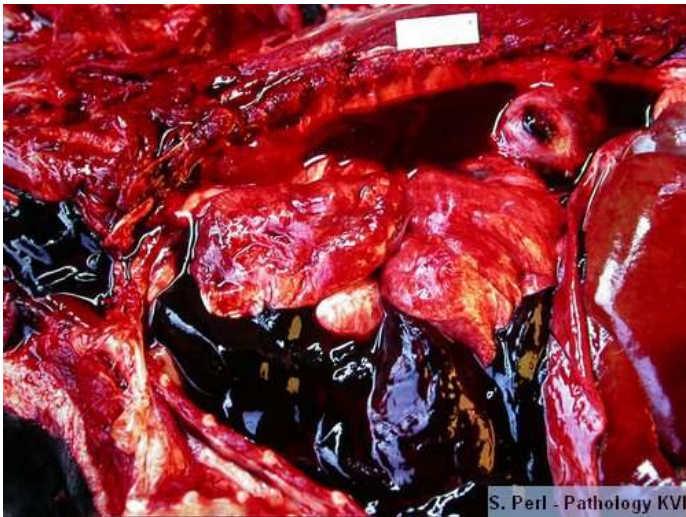




Hemothorax, cow



Hemothorax, cow



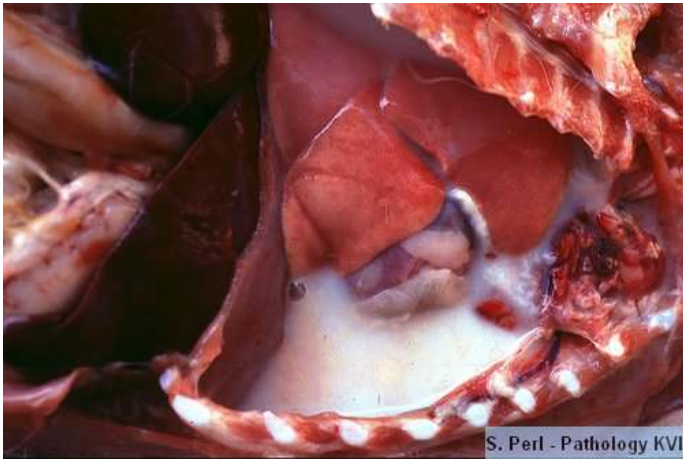
Hemothorax, caused by aortic aneurism rupture due to *Spirocerca lupi*, dog



Spirocerca lupi found in the esophageal granuloma



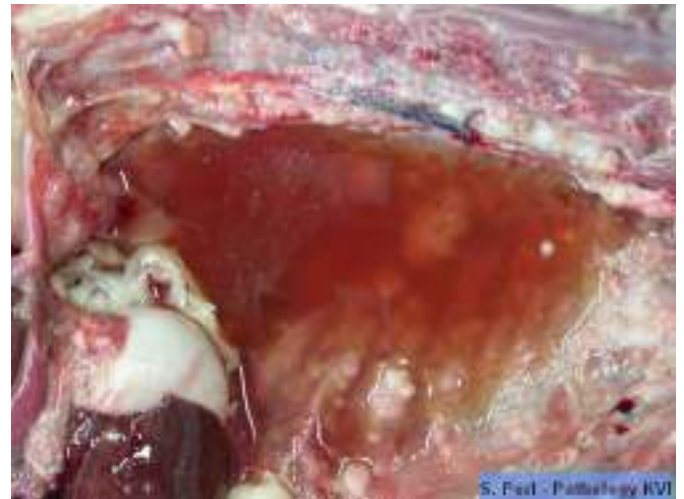
Fibrinous pleuritis, calf



Chylothorax, dog



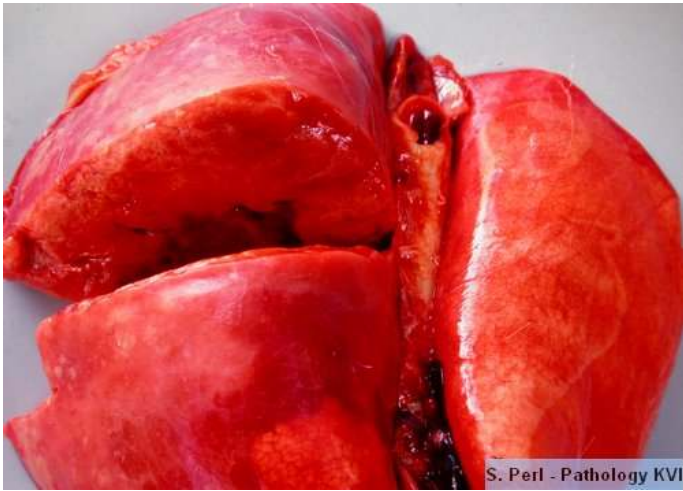
Mesothelioma, dog



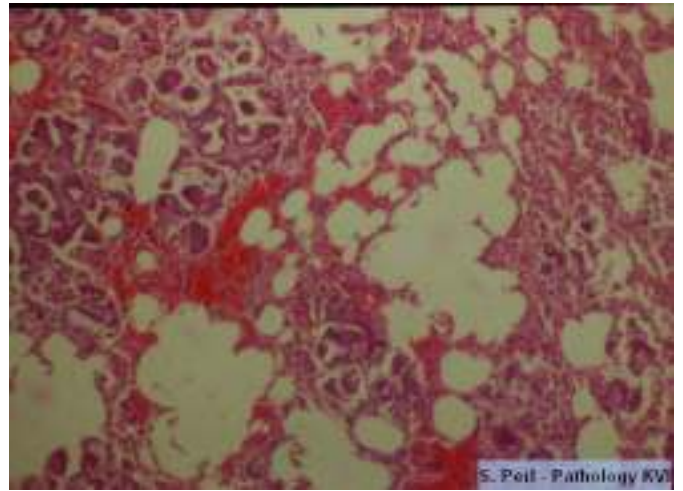
Mesothelioma and pleural effusion, dog



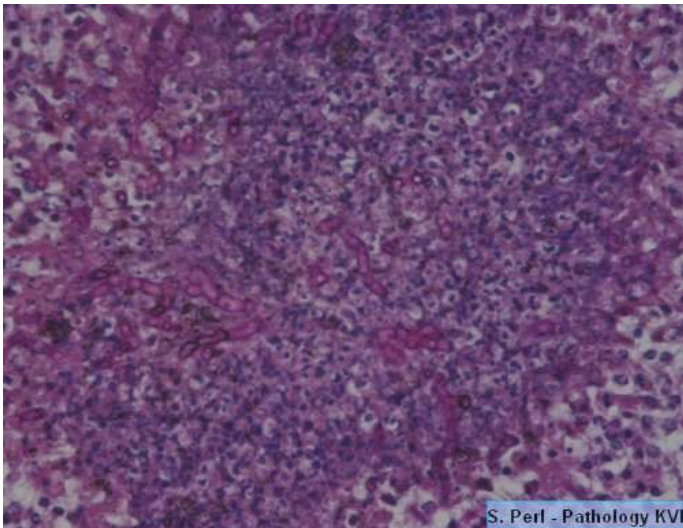
Mesothelioma, parietal pleura, dog



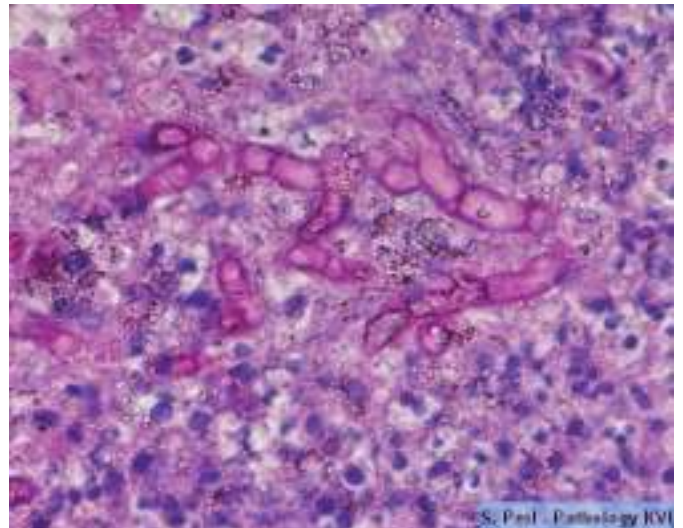
Pulmonary adenomatosis, adult sheep



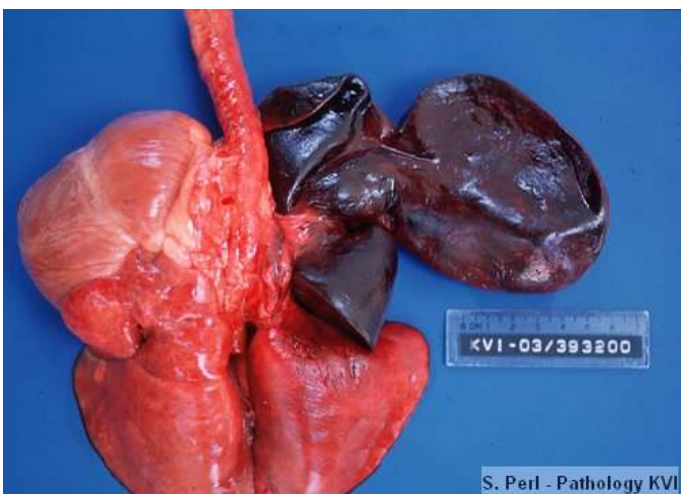
Pulmonary adenomatosis, (adenocarcinoma)
histological aspect, sheep



Lung, fungal granuloma, calf



Lung, fungal granuloma (*Aspergillus*) calf



Cranial lobe torsion, lung, dog